

**THE COUNCIL OF THE CITY AND
COUNTY OF SWANSEA
CYNGOR DINAS A SIR ABERTAWE
TEMPORARY ROAD CLOSURES
SLADE ROAD, NEWTON, SWANSEA.
NOTICE 2024**

NOTICE is hereby given that the Council of the City and County of Swansea in pursuance of its powers under the Road Traffic Regulation Act 1984 (as amended) intend to close the above-mentioned road. In order for City & County of Swansea Council to undertake Patch repairs to the highway network it will be necessary to temporarily close the above roads to vehicular traffic.

**SCHEDULE
TEMPORARY ROAD CLOSURES
SLADE ROAD, NEWTON, SWANSEA.**

**SCHEDULE - TEMPORARY ROAD CLOSURE
SLADE ROAD, NEWTON, SWANSEA**

Slade Road over its entire length from its junction with Newton Road in a northeasterly direction for a distance of approximately 350 metres

The alternative route for vehicular traffic will be via Newton Road, Highpool Lane, Highmead Avenue, the Orchard, Bramley Drive and Sherringham Drive a distance of approximately 1.1 Kilometres.

Similarly this route will only operate in the reverse direction.

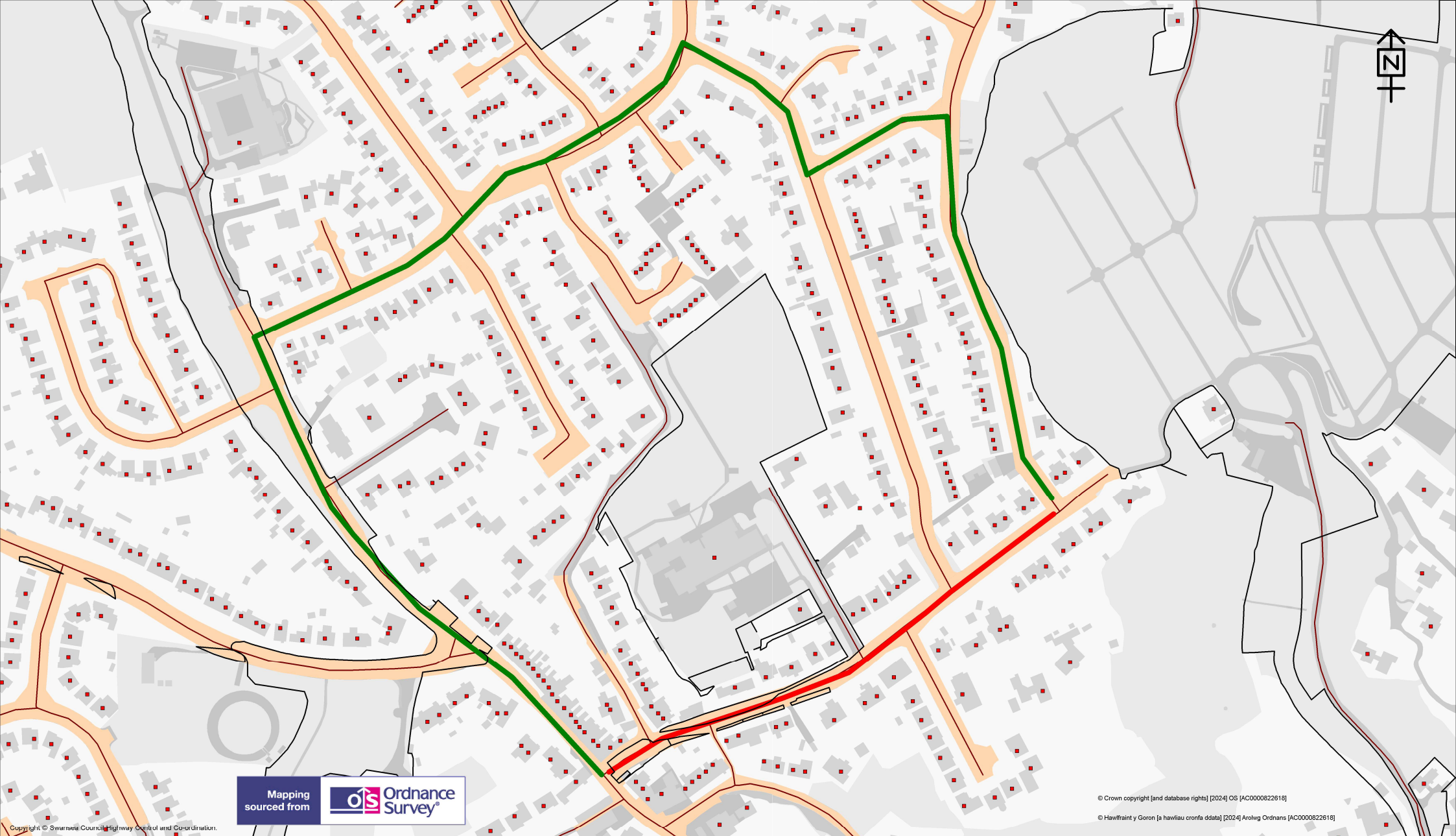
Access for emergency vehicles and residents to be maintained at all times.

The closure will operate from **Tuesday 13th August 2024** for 5 days (Or until the works are completed whichever is the sooner). It is anticipated the works will take 2 days to complete.

Dated this 13th August 2024

**TRACEY MEREDITH
CHIEF LEGAL OFFICER / PRIF SWYDDOG CYFREITHIOL
LEGAL, DEMOCRATIC SERVICES & BUSINESS INTELLIGENCE
GWASANAETHAU CYFREITHIOL, DEMOCRATAIDD A DEALLUSRWYDD
BUSNES
CIVIC CENTRE
CANOLFAN DDINESIG
SWANSEA
ABERTAWE
SA1 3SN**

If you have any queries about this Notice please ring Dean Howard on 01792 841675



© Crown copyright [and database rights] [2024] OS [AC0000822618]

© Hawffraint y Goron [a hawliau cronfa ddata] [2024] Arolwg Ordnans [AC0000822618]



TEMPORARY TRAFFIC REGULATION ORDER

KEY

- Temporary Road Closure ■
- Alternative Route ■

Scale
1:2868

Drawn GD	Checked GD
Revision A	Date 13/08/2024

Highways and Transportation

Mr Stuart Davies,
Head of Highways
City and County of Swansea,
Station Road, Players Industrial Estate,
Clydach, Swansea, SA6 5BJ

Slade Road Newton

Dwg/Ref.No.
4162