



Communication to Funeral Directors on Behalf of Swansea Bay University Health Board, Swansea Council and Neath Port Talbot Borough Council

Dear Colleagues,

On behalf of the three organisations we wanted to contact you all personally to convey our thanks in the vitally important role you are already playing, in ensuring that those who sadly lose their lives as a result of the Covid19 pandemic, are cared for in the most dignified and timely manner possible despite the pressures on us all.

It is vitally important that we all work together to ensure Swansea Bay University Health Board Mortuary Capacity is not overwhelmed by ensuring the timely removal and collection of the deceased. **The Mortuary cannot be used as a temporary holding bay if your own facilities are full.** If you anticipate capacity might become an issue, possible solutions could include liaising with fellow funeral directors to see how you could assist each other, and we would encourage you to plan for mutual aid arrangements if you feel this might be an issue. Alternatively, at the earliest opportunity we would ask that you please notify your local authority or health board (via the contact details in this letter) if capacity issues arise so we can assist in you in trying to resolve the issue. This can only be achieved by working together at this difficult time.

The following information will provide you with an update on a number of items relating to the COVID19 pandemic.

New Temporary Body Stores within Swansea Bay University Health Board

To support any rise in deaths, the Health Board have created two Temporary Body Stores. A large refrigerated structure has been sited adjacent to the Morriston Hospital Mortuary, which will increase the capacity. In Neath Port Talbot Hospital a structure has been created directly outside the existing Body Store which will have additional spaces. Access to these locations are as normal.

Shielding structures have also been erected covering the Mortuary entrances in Morriston and Singleton Hospitals. These structures will make the logistics of transferring the deceased far more private as well as ensuring the areas are clear of other vehicles.

Llandarcy Field Hospital

The new Field Hospital in Llandarcy will open week commencing 27th April 2020. A temporary body storage area has been sited adjacent to the building to provide

additional capacity. The entrance to this site will be a lane running alongside the Llandarcy Academy to gain access around the back adjacent to the AstroTurf football fields.

Bay Field Hospital

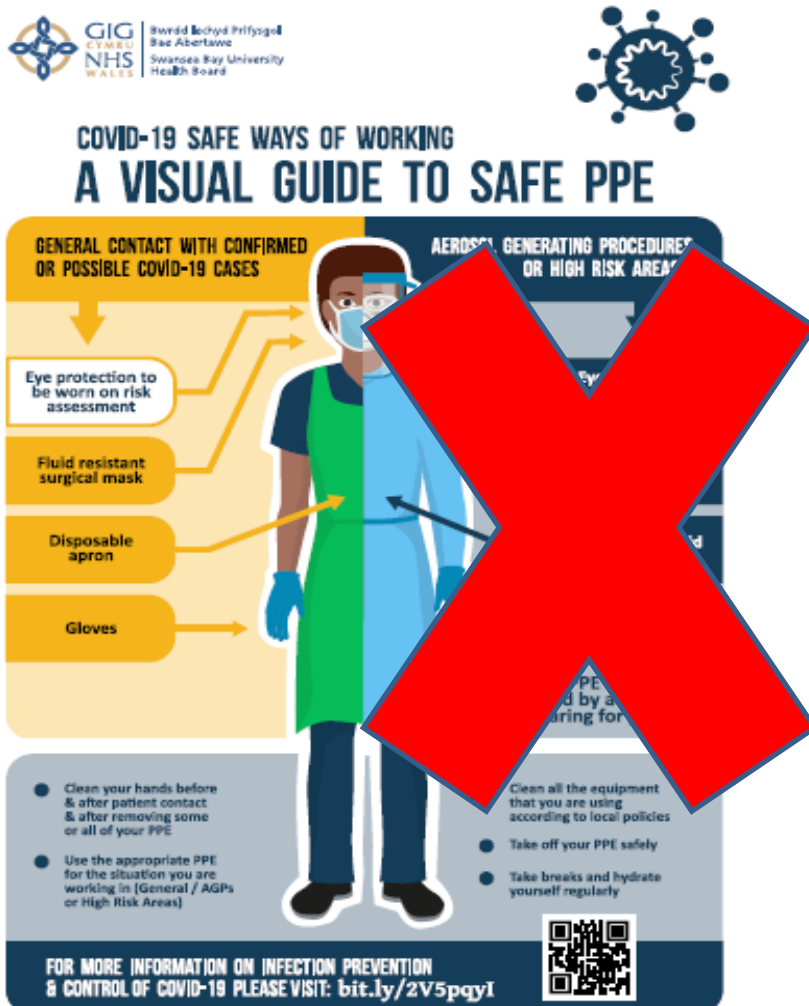
The Bay Field Hospital will become operational in the mid May 2020 if required. Like our Community Hospitals, there will be no dedicated Body Storage thus we will expect the deceased to be collected directly from the Bay Field Hospital. Access arrangements will be shared once the hospital is open.

Contingency Plans

Contingency plans have also been developed for the transportation of the deceased to a temporary regional body store. Dedicated transport arrangements have been planned to facilitate this if required. However, it is our hope that by working together and having created the additional spaces within the Health Board that we can prevent the need to transport the deceased from our communities to these sites.

Personal Protective Equipment (PPE) Requirements for Funeral Directors

To clarify the PPE requirements the following graphics will hopefully provide clarification. Funeral Directors are requested to wear a mask, gloves and apron. A risk assessment should be completed to clarify whether eye protection is also required.



Access to PPE

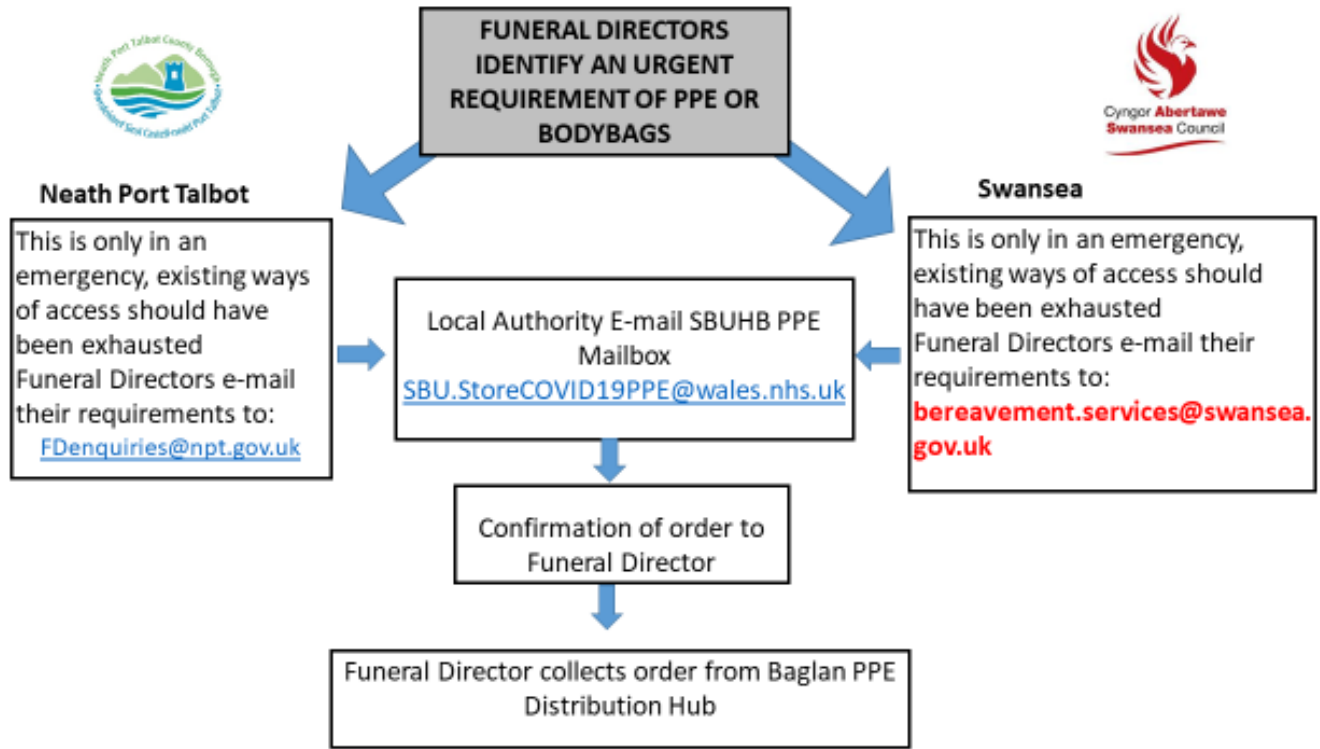
Funeral directors have been identified as a high priority group for PPE given their essential work and close and unavoidable contact with confirmed or suspected Covid-19 cases. Concerns have been raised by Funeral Directors that they may not be able to obtain PPE, and to assist, the Local Resilience Forum has provided details of suppliers which are provided in a table below.

Company Name	Contact Name	Tel Nos	email
Wales West Building Products	Julian Jenkins	01269 267 030 07971 920 695	
BCB International Ltd	Andrew Howell	+44 7970 852 488 +44 29 2043 3700	arh@bcb.in.com
CCS McClays	Rhodri Morgan	02920104810 07890984427	rmorgan@ccsmclays.co.uk
Chemical Corporation	Rhyan Wilcox	Mobile: 07772845901 Office: 02920 880222	Rhyan.wilcox@chemcorp.co.uk
Dragon Signs	Mike Roche	T : 029 2022 6501 M: 07875 070768	E : mike@dragonsigns.com
Kesslers	Philip Cuthbertson	+44 (0) 7917 647214	
MMS Group	Andy Duffy	Tel: 01384 411101 M: 07714013277	andyduffy@mmsgroup.co.uk
Ocean Business Supplies		(029) 20487172	tanwen@oceanbusinesssupplies.com

Where funeral directors are experiencing problems securing this PPE equipment through their normal channels they will be able to access the central stocks of PPE, held by NHS Shared Services Partnership (SSP), through their Local Resilience Forum. This should be in an emergency, as a last resort not first.

You will be contacted to arrange collection from the PPE Hub in Baglan, unless the request is felt unreasonable or above the level indicated within the national guidance in which case you will be contacted and informed of this. Obviously you're responsible for your own risk assessments and may choose to enhance your PPE specifications through your own procurement chains.

There is no guarantee that PPE supplies will be able to be supplied as the issue is a global problem. To simplify the process the Local Authorities have compiled the following flow plan and an email should be sent to the addresses set out in the below diagram.



Provision of Body Bags

The provision of body bags is normally dealt with locally, via each organisation / companies' own procurement arrangements.

However in the current exceptional circumstances, and given the strain on existing supply chains, it has been agreed that body bags will form part of the stock that can be ordered from the (SSP) which is already responsible for provision of PPE to Wales NHS and for social care through local authority joint equipment stores.

Conclusion

We will provide further information as and when it becomes available, but thank you for your ongoing support and cooperation during this unprecedented crisis.

Kind regards

Swansea Bay University Health Board

Christine Morrell

Deputy Director of Therapies & Health Science

SBU COVID19: Fatalities Cell Lead

Swansea Council

Leader

Councillor Rob Stewart



Chief Executive

Phil Roberts



Neath Port Talbot Council

Leader

Councillor Rob Jones



Chief Executive

Steve Phillips

