



## A secluded walk following the steep-sided valley of the Lower Clydach River

The wooded slopes harbour mature trees of oak and ash with abundant hazel. Coppicing - cutting trees to ground level which promotes regrowth - is being used in places to open up the canopy and allow light to the woodland floor. Typical ancient woodland plants include bluebell, wood anemone, primrose, and opposite-leaved golden saxifrage.

Once a busy mining area, Cwm Clydach is now an RSPB reserve of note for breeding pied flycatcher and wood warbler. Dipper and grey wagtail nest along the fast-flowing river.

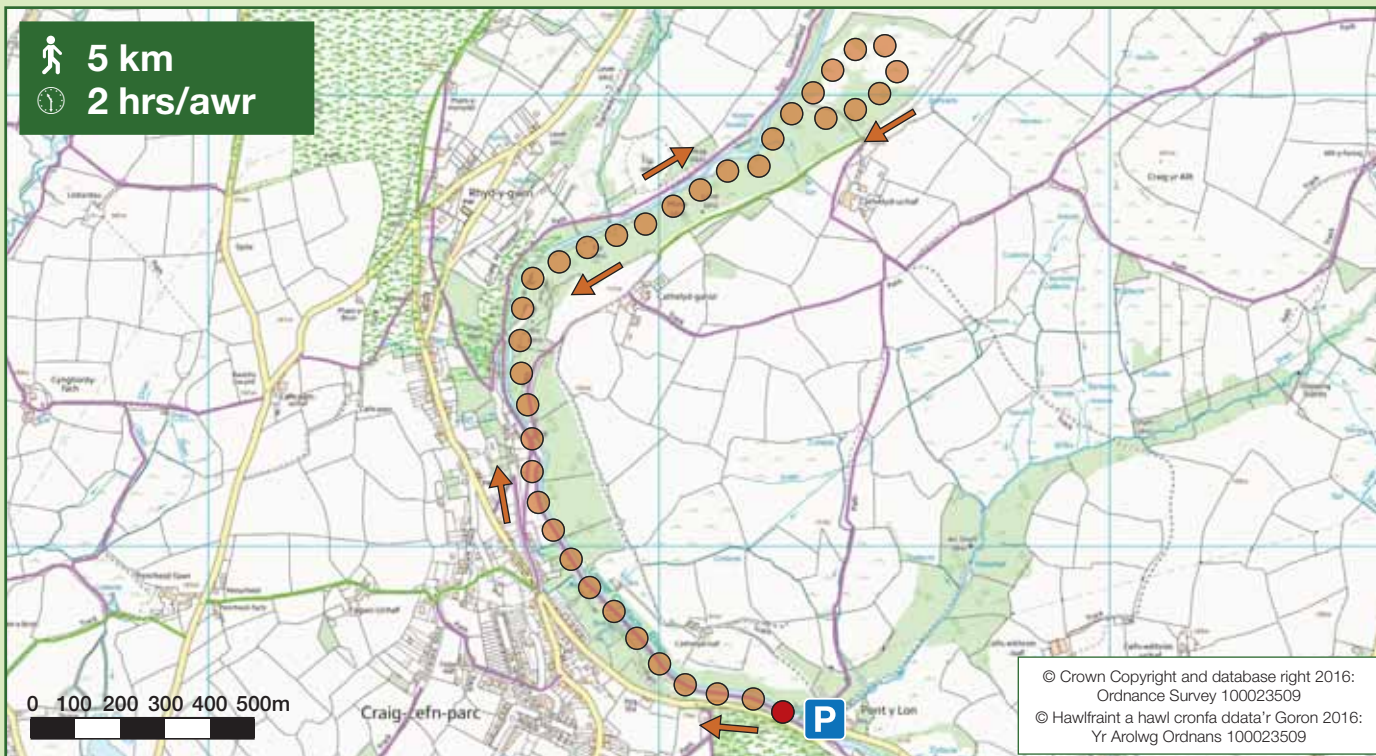
The path follows the river initially then climbs away uphill to loop around an area of marshy grassland and younger woodland of birch and hazel. Scan the skies here for raven, buzzard, red kite or sparrowhawk. After completing the loop retrace your steps to the start.

## Taith gerdded ddiaffordd ar hyd cwm afon Clydach Isaf sydd â llethrau serth

Mae'r llethrau coediog yn gartref i goed derw ac ynn aeddfed gyda digonedd o goed cyll. Mae prysgoedio - system o dorri coed i lefel y ddaear i sbarduno ailgyfiant - yn cael ei defnyddio mewn mannau i agor y canopi a galluogi goleuni i gyrraedd llawr y coetir. Mae planhigion nodweddiadol coetiroedd hynafol yn cynnwys clychau'r gog, blodau'r gwynt, briallu, ac egllyn cyferbynddail.

Mae Cwm Clydach, a oedd unwaith yn ardal lofaol brysur, bellach yn warchodfa RSPB sy'n nodedig am fridio gwybedogion brithion a thelorion y coed. Mae bronwennod y dŵr a siglennod llwydion yn nythu ar lannau'r afon chwim.

Ar y dechrau mae'r llwybr yn dilyn yr afon yna mae'n dringo ar i fyny oddi wrthi i gylchu ardal o laswelltir corsiog a choetir iau o fedw a chyll. Cadwch lygad ar yr awyr i weld cigfran, boncath, barcud coch neu gudyll glas. Ar ôl cwblhau'r cylch, cerddwch yn ôl i'r man dechrau.



## Trail Information / Gwybodaeth am y Lwyr

### START / DECHRAU (GR/CG - SN 683 026)

RSPB car park off Craigeffnparc road by river  
Maes parcio'r RSPB oddi ar Heol Craigeffn-parc ger yr afon

### PARKING / PARCIO

Dedicated car park / Maes parcio dynodedig

### PUBLIC TRANSPORT / CLUDIANT CYHOEDDUS

Bus stop by the New Inn on Lone Road about 100m from the car park entrance.

Safle bws ger tafarn y New Inn ar Heol Lone tua 100m o fynedfa'r maes parcio.

*Mostly level, some steep sections with steps, boardwalk and stony muddy paths. Initial sections by the river are on level surfaced paths.*

*Yn wastad yn bennaf, rhai rhannau serth â grisiau, llwybr estyll a llwybrau caregog, mwdlyd. Mae'r rhannau cyntaf ger yr afon ar lwybrau ag wyneb gwastad.*