

**THE COUNCIL OF THE CITY AND COUNTY OF SWANSEA  
CYNGOR DINAS A SIR ABERTAW  
TEMPORARY ROAD CLOSURE  
MOUNT CRESCENT, PENLLERGAER, SWANSEA  
NOTICE 2025**

**NOTICE** is hereby given that the Council of the City and County of Swansea in pursuance of its powers under the Road Traffic Regulation Act 1984 (as amended) intend to make an Order. In order for Dwr Cymru Welsh Water Section to carry out an Installation/Diversion of Storm Sewer it will be necessary to temporarily close the above road to vehicular traffic.

**SCHEDULE**

**SCHEDULE – TEMPORARY ROAD CLOSURE**  
**MOUNT CRESCENT, PENLLERGAER**

Mount Crescent in a westerly direction from its junction with Dillwyn Road to its junction with Heol Gelli, a distance of approximately 160 metres.

The alternative route for vehicular traffic will be via Heol Gelli, Llewellyn Road, Heol Dewi Sant and the unaffected length of Mount Crescent, a distance of approximately 1 kilometres.

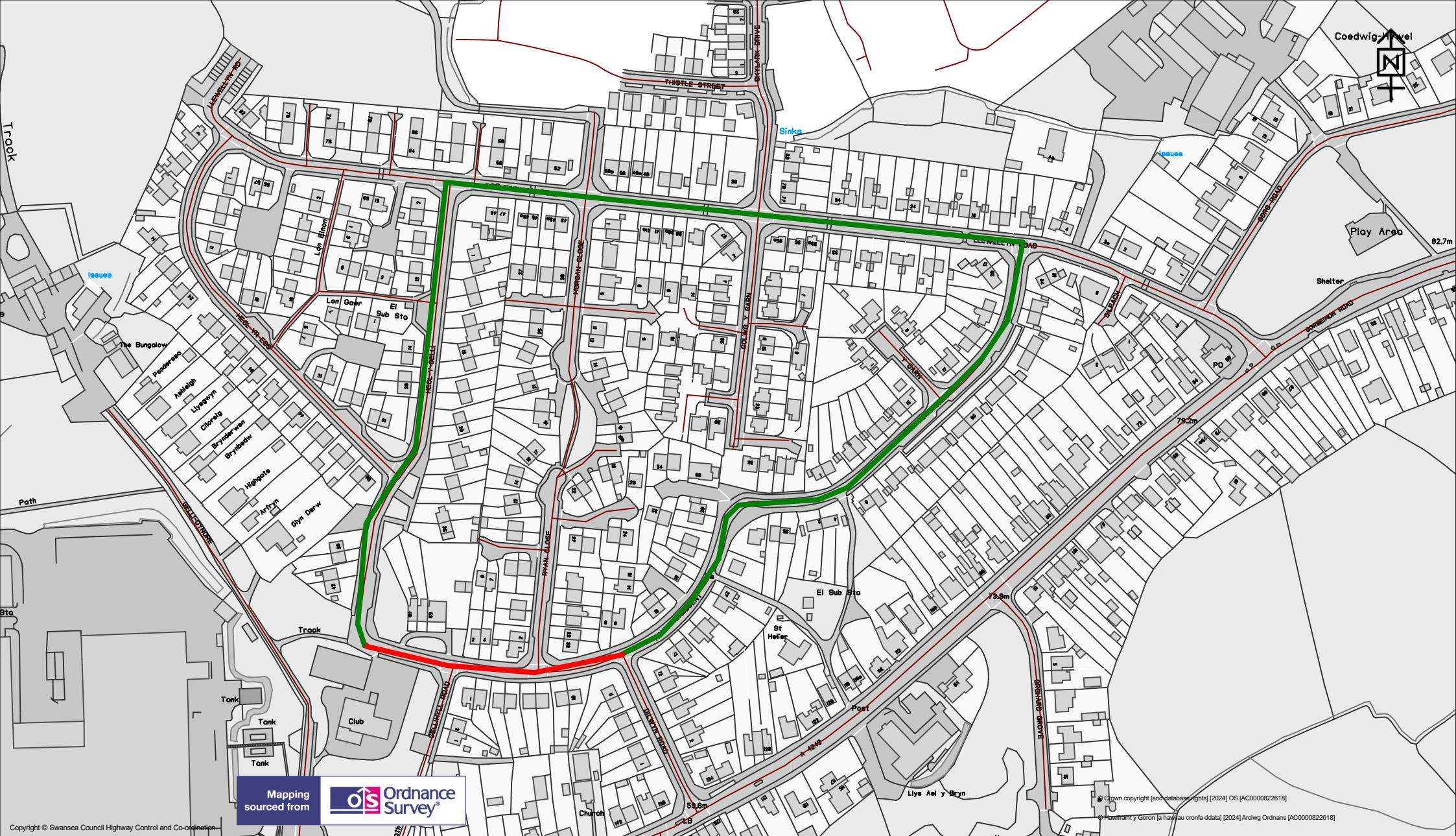
Similarly, this route will work in the reverse direction.

**Access for emergency vehicles and pedestrians to be maintained at all times.**

The maximum duration of the order is 18 months and it is anticipated the work will take **8 weeks** to complete effective from **Monday 20th January 2025**.

13<sup>th</sup> January 2025

**TRACEY MEREDITH**  
**CHIEF LEGAL OFFICER / PRIF SWYDDOG CYFREITHIOL**  
**LEGAL, DEMOCRATIC SERVICES**  
**GWASANAETHAU CYFREITHIOL, DEMOCRATAIDD A DEALLUSRWYDD**  
**BUSNES**



Mapping sourced from Ordnance Survey

Copyright © Swansea Council Highway Control and Co-ordination

© Crown copyright [and database rights] [2024] OS [AC0000822618]  
 © Hafreint y Goron [a hawflau cronfa ddata] [2024] Arolwg Ordernans [AC0000822618]



# TEMPORARY TRAFFIC REGULATION ORDER

**KEY**

Temporary Road Closure

Alternative Route

Scale 1:2898

Drawn AR	Checked AR
-------------	---------------

Revision A	Date 21/11/2024
---------------	--------------------

Dwg/Ref.No.  
4240

**Highways and Transportation**  
 Mr Stuart Davies,  
 Head of Highways  
 City and County of Swansea,  
 Station Road, Players Industrial Estate,  
 Clydach, Swansea, SA6 5BJ

**Mount Crescent**