

THE COUNCIL OF THE CITY AND COUNTY OF SWANSEA
CYNGOR DINAS A SIR ABERTAWE
TEMPORARY ROAD/FOOTWAY CLOSURE
HEOL MAES EGLWYS OVERBRIDGE, CWMRHYDYCEIRW, SWANSEA
NOTICE 2025

NOTICE is hereby given that the Council of the City and County of Swansea in pursuance of its powers under the Road Traffic Regulation Act 1984 (as amended) intend to make an Order. In order for SWTRA to carry out bridge refurbishment works above location; it will be necessary to temporarily close the above footway and section of road to pedestrian footfall and vehicular traffic.

SCHEDULE

SCHEDULE 1 – TEMPORARY FOOTWAY CLOSURE

HEOL MAES EGLWYS OVERBRIDGE

Heol Maes Eglwys from its junction with Llanllienwen Close, in a Northerly direction to its junction with Rhodfa Fadog, a distance of approximately 80 metres.

The closure will operate from Monday 7th July 2025 for 18 months (alternatively, until the works are completed whichever is the sooner). It is anticipated the works will take 7 weeks to complete.

SCHEDULE 2 – TEMPORARY ROAD CLOSURE

HEOL MAES EGLWYS OVERBRIDGE

Heol Maes Eglwys from its junction with Llanllienwen Close, in a Northerly direction to its junction with Rhodfa Fadog for a distance of approximately 80 metres.

The alternative route for vehicular traffic will be via Llanllienwen Road, Ynysforgan Roundabout, Neath Road, Clase Road, Pentrepoeth Road, Clasemont Road, Pant Lasau Road and the unaffected section of Heol Maes Eglwys, a distance of approximately 8.5 kilometres.

Similarly, this route will operate in the reverse direction.

The closure will operate from Friday 18th July 2025 for 18 months (alternatively, until the works are completed whichever is the sooner). It is anticipated the works will take 6 weeks to complete.

Access for emergency vehicles and pedestrians to be maintained at all times.

30th June 2025

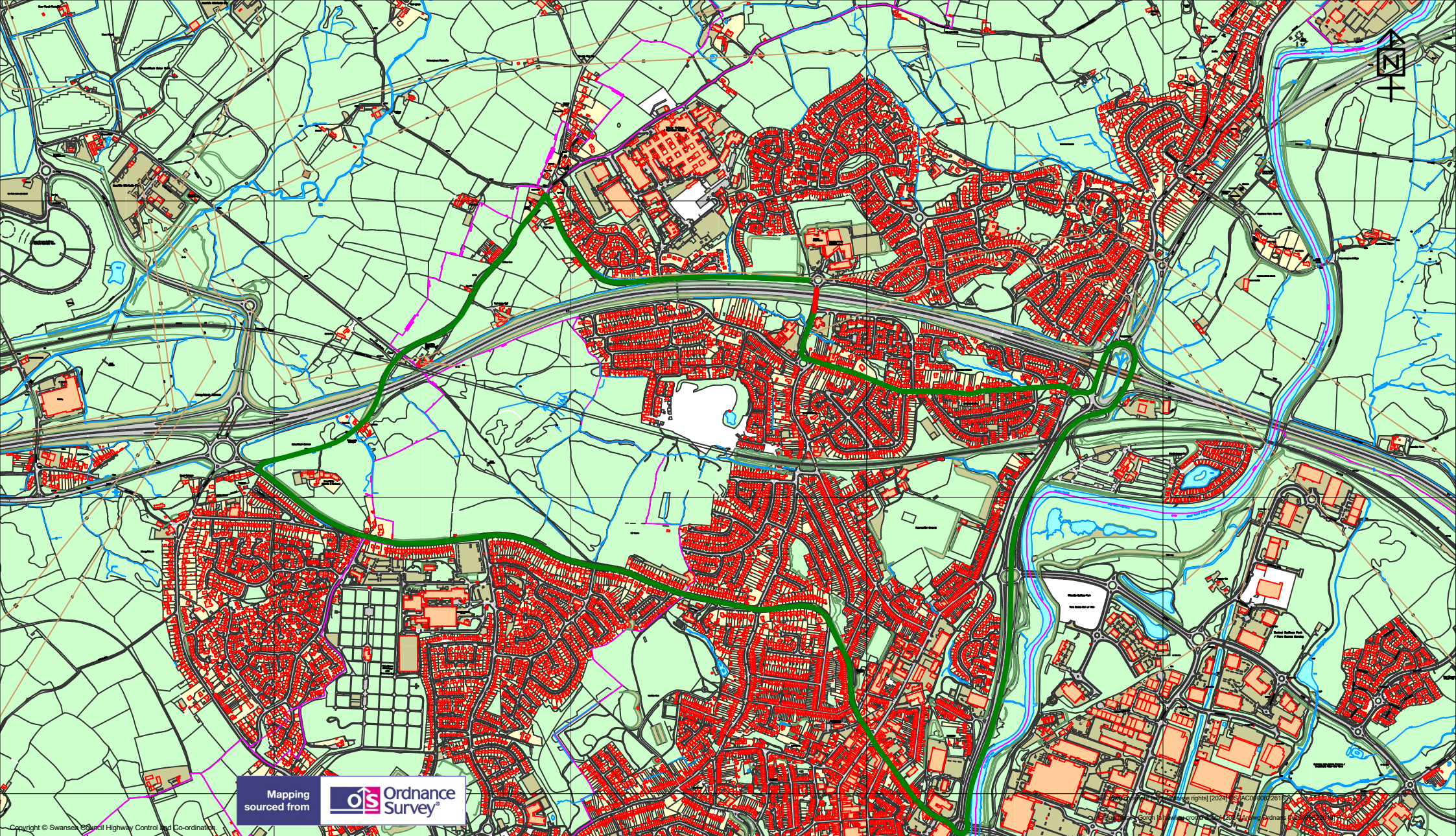
L A MOORE

CHIEF LEGAL OFFICER / PRIF SWYDDOG CYFREITHIOL

LEGAL & DEMOCRATIC SERVICES

GWASANAETHAU CYFREITHIOL A DEMOCRATAIDD





Mapping sourced from  Ordnance Survey



Highways and Transportation
 Mr Stuart Davies,
 Head of Highways
 City and County of Swansea,
 Station Road, Players Industrial Estate,
 Clydach, Swansea, SA6 5BJ

TEMPORARY TRAFFIC REGULATION ORDER

4382 - Heol Maes Eglwys Overbridge

KEY

- Temporary Road Closure 
- Alternative Route 

Scale 1:16549

Drawn RHYSH	Checked RHYSH
----------------	------------------

Revision A	Date 02/06/2025
---------------	--------------------

Dwg/Ref.No.
4382