

**THE COUNCIL OF THE CITY AND COUNTY OF SWANSEA**  
**CYNGOR DINAS A SIR ABERTAWE**  
**TEMPORARY ROAD/FOOTWAY CLOSURE**  
**HEOL MAES EGLWYS OVERBRIDGE, CWMRHYDYCEIRW, SWANSEA**  
**NOTICE 2025**

**NOTICE** is hereby given that the Council of the City and County of Swansea in pursuance of its powers under the Road Traffic Regulation Act 1984 (as amended) has made an Order. In order for SWTRA to carry out bridge refurbishment works above location; it will be necessary to temporarily close the above footway and section of road to pedestrian footfall and vehicular traffic.

**SCHEDULE**

**SCHEDULE 1 – TEMPORARY FOOTWAY CLOSURE**

**HEOL MAES EGLWYS OVERBRIDGE**

Heol Maes Eglwys from its junction with Llanllienwen Close, in a Northerly direction to its junction with Rhodfa Fadog, a distance of approximately 80 metres.

The closure will operate from Monday 7<sup>th</sup> July 2025 for a 18 months (alternatively, until the works are completed whichever is the sooner). It is anticipated the works will take 7 weeks to complete.

**SCHEDULE 2 – TEMPORARY ROAD CLOSURE**

**HEOL MAES EGLWYS OVERBRIDGE**

Heol Maes Eglwys from its junction with Llanllienwen Close, in a Northerly direction to its junction with Rhodfa Fadog for a distance of approximately 80 metres.

The alternative route for vehicular traffic will be via Llanllienwen Road, Ynysforgan Roundabout, Neath Road, Clase Road, Pentrepoeth Road, Clasemont Road, Pant Lasau Road and the unaffected section of Heol Maes Eglwys, a distance of approximately 8.5 kilometres.

Similarly, this route will operate in the reverse direction.

The closure will operate from Friday 18<sup>th</sup> July 2025 for 18 months (alternatively, until the works are completed whichever is the sooner). It is anticipated the works will take 6 weeks to complete.

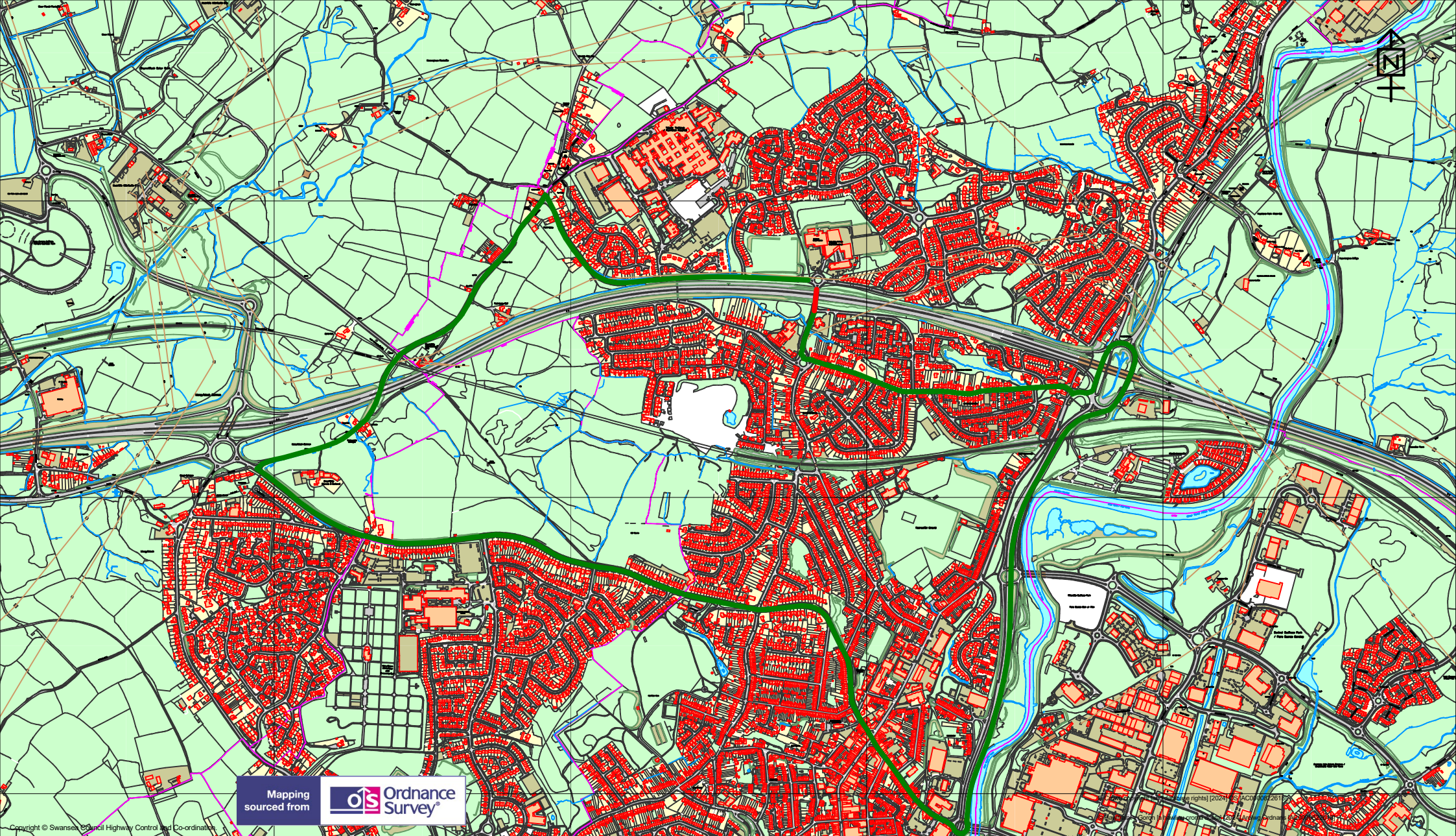
**Access for emergency vehicles and pedestrians to be maintained at all times.**

7<sup>th</sup> July 2025

**L A MOORE**

**CHIEF LEGAL OFFICER / PRIF SWYDDOG CYFREITHIOL**  
**LEGAL & DEMOCRATIC SERVICES**  
**GWASANAETHAU CYFREITHIOL A DEMOCRATAIDD**





Mapping sourced from  
 Ordnance Survey



## Highways and Transportation

Mr Stuart Davies,  
 Head of Highways  
 City and County of Swansea,  
 Station Road, Players Industrial Estate,  
 Clydach, Swansea, SA6 5BJ

## TEMPORARY TRAFFIC REGULATION ORDER

4382 - Heol Maes Eglwys Overbridge

### KEY

Temporary Road Closure   
 Alternative Route 

Scale  
 1:16549

Drawn  
 RHYSH

Checked  
 RHYSH

Revision  
 A

Date  
 02/06/2025

Dwg/Ref.No.  
 4382