

THE COUNCIL OF THE CITY AND COUNTY OF SWANSEA
CYNGOR DINAS A SIR ABERTAWE
EMERGENCY TEMPORARY ROAD/FOOTWAY CLOSURE
HEOL MAES EGLWYS/ LLANLLIENWEN CLOSE (PART), CWMRHYDYCEIRW, SWANSEA
NOTICE 2025

NOTICE is hereby given by the Council of the City and County of Swansea in pursuance of its powers as contained in section 14 (2) of the Road Traffic Regulation Act 1984 (as amended) that from **Friday 22nd August 2025** for a period of 21 days only (or until the works are completed whichever is sooner – it is anticipated that the work will take 10 days to complete), no person shall walk along or cause any vehicle to be driven as referred to in the schedule below. In order for the South Wales Trunk Road Agent (SWTRA) to carry out bridge refurbishment works at the above location, it will be necessary to temporarily close the above road in part to vehicular traffic.

SCHEDULE

SCHEDULE – EMERGENCY TEMPORARY ROAD/ FOOTWAY CLOSURE
HEOL MAES EGLWYS OVERBRIDGE/LLANLLIENWEN CLOSE(PART)

Heol Maes Eglwys from its junction with Llanllienwen Road in northerly direction to its junction with Llanllienwen Close for a distance of approximately 165 metres.

Llanllienwen Close from the entrance with the Deer's Leap PH, in a Westerly direction to its junction with Heol Maes Eglwys for a distance of approximately 35 metres

The alternative route for vehicular traffic will be via Llanllienwen Road, Ynysforan Roundabout, Neath Road, Clase Road, Pentrepoeth Road, Clasemont Road, Pant Lasau Road and the unaffected section of Heol Maes Eglwys, a distance of approximately 8.5 kilometres.

Similarly, this route will operate in the reverse direction.

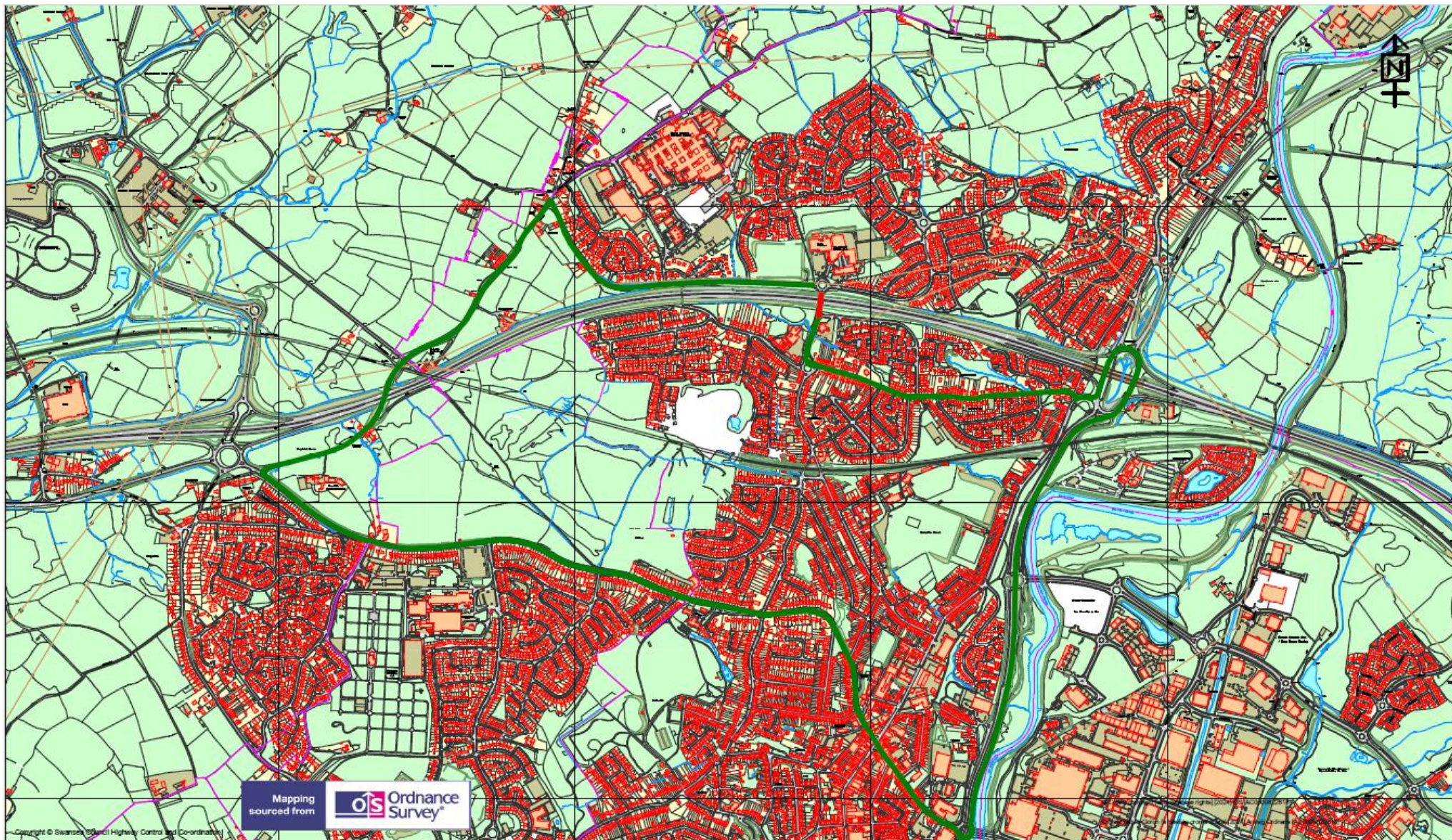
Access for emergency vehicles to be maintained at all times.




The applicant will be responsible for the erection and maintenance of all advanced warning, Road Closed, diversion and alternative route signs in accordance with Chapter 8 of the Traffic Signs Manual and the Traffic Signs and Regulations and General Directions 2016 for the duration of the works.

Dated this 21st August 2025

L A MOORE
CHIEF LEGAL OFFICER/PRIF SWYDDOG CYFREITHIOL
LEGAL AND DEMOCRATIC SERVICES
GWASANAETHAU CYFREITHIOL A DEMOCRATAIDD
SWANSEA
ABERTAWE
SA1 3SN





	TEMPORARY TRAFFIC REGULATION ORDER	<div>KEY</div> <div>Temporary Road Closure </div> <div>Alternative Route </div>	Scale 1:16549	
<div>Highways and Transportation</div> <div>Mr Stuart Davies. Head of Highways City and County of Swansea, Station Road, Players Industrial Estate, Clydach, Swansea, SA6 5BJ</div>	4382 - Heol Maes Eglwys Overbridge		Drawn RHYSH	Checked RHYSH
			Revision A	Date 02/06/2025
			Dwg/Ref.No. 4382	