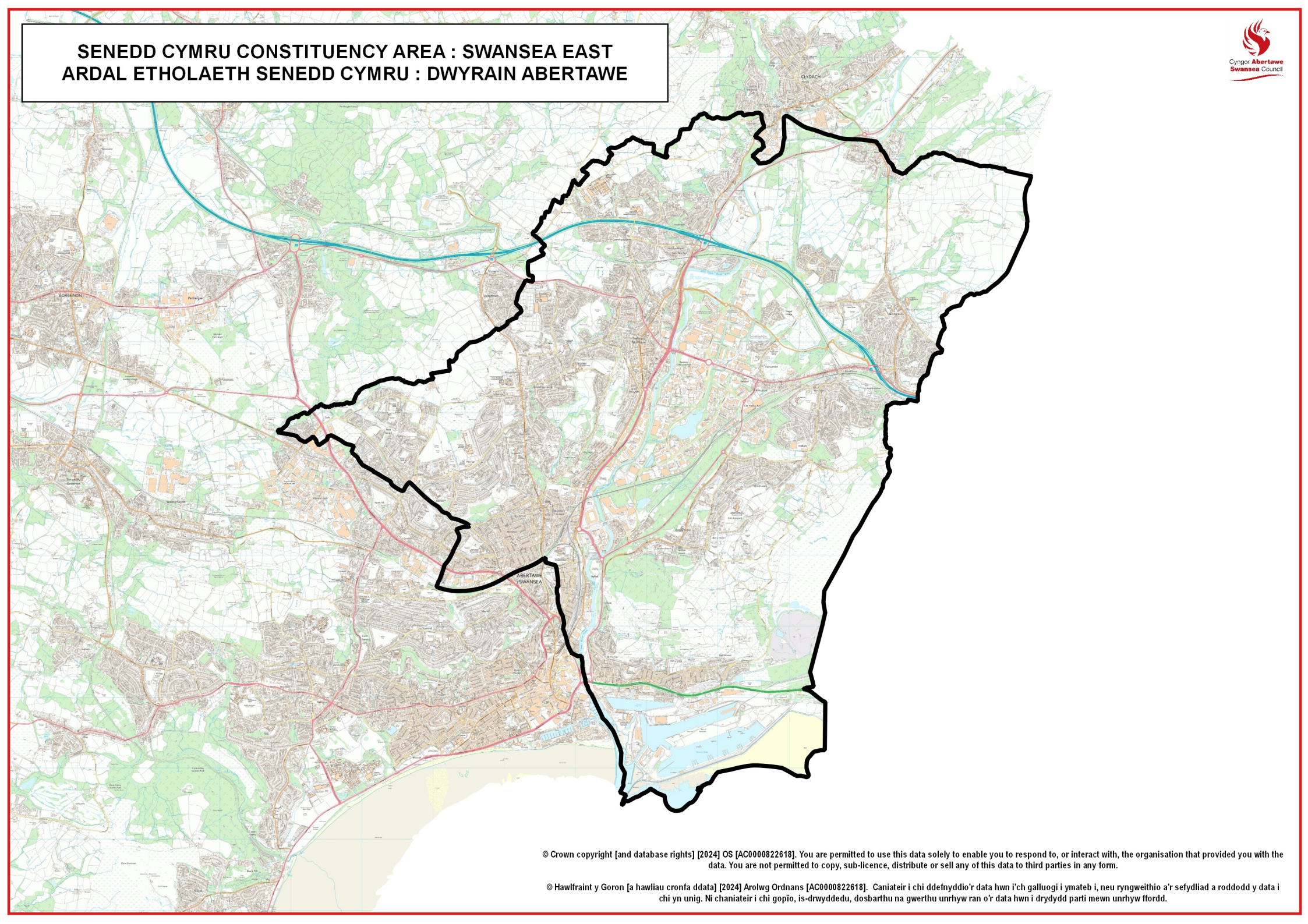


**SENEDD CYMRU CONSTITUENCY AREA : SWANSEA EAST**  
**ARDAL ETHOLAETH SENEDD CYMRU : DWYRAIN ABERTAWE**



© Crown copyright [and database rights] [2024] OS [AC0000822618]. You are permitted to use this data solely to enable you to respond to, or interact with, the organisation that provided you with the data. You are not permitted to copy, sub-licence, distribute or sell any of this data to third parties in any form.

© Hawlfraint y Goron [a hawliau cronfa ddata] [2024] Arolwg Ordnans [AC0000822618]. Caniateir i chi ddefnyddio'r data hwn i'ch galluogi i ymateb i, neu ryngweithio a'r sefydliad a roddodd y data i chi yn unig. Ni chaniateir i chi gopïo, is-drwyddedu, dosbarthu na gwerthu unrhyw ran o'r data hwn i drydydd parti mewn unrhyw ffordd.